

CHELMSFORD MC



**MCJ**  
engineering

# Brands Hatch Winter Stages

**Saturday 16th January 2021**

**MOTORSPORT  
NEWS** **CIRCUIT RALLY  
CHAMPIONSHIP**  
IN ASSOCIATION WITH **MSVR**

## Supplementary Regulations

Results: <http://www.vola-racing.com/rallypro/nicholls/>  
The Marsh Commercial 2021 AEMC/AEMC Stage Rally Championship  
The 2021 ACSMC Stage Rally Championship

**[www.brandshatchstages.co.uk](http://www.brandshatchstages.co.uk)**



Recognised  
Club





# Supplementary Regulations



**Telephone:** 01245 400161  
**Email:** mick@mgj-engineering.co.uk

**Mobile:** 07946588240  
**Web:** www.mgj-engineering.co.uk

**Proud sponsor of the 2021 MGJ Brands Hatch Winter Stages Rally.**

MGJ Engineering is a leading engineering service supplier for manufacturing industries. Our workshop is located in Moss Road, Witham Essex. We can provide a nationwide service across the UK. We have over 30 years of experience in Fabrication of metal parts, precision engineering, tool making and over 20 years of experience in maintenance engineering services.

We offer a range of engineering services from general maintenance and fabrication to precision made items, with the ability to bring a solution to most engineering needs or issues.

We can provide welding services both on and off site using a number of different types of portable welding plants. We can weld in tig, mig and arc - with the following materials; Mild steel, aluminium, and stainless steel.

Fabrication: Including machine parts and guarding, spa's, walkways, platforms, stairs, work benches security fencing, grills and access gates, change part boards and change part trolleys.

We have ISO9001 accreditation and are audited and approved by the safe contractor organisation.

If you think we can help or assist in anyway send us an email or call us.

We would also like to thank our sponsors: IMJ Building services, and Brooks-Harper Recruitment and also our technical partner: SR Motor works.



Electrical & Mechanical contractors



# **MICHELIN PILOT SPORT R**

**RALLY WINNING ASPHALT TYRE RANGE 2020.**  
**TAKE YOUR CHANCE IN 2020/21!**



MEDIAKIX

For more information on MICHELIN Motorsport Rally Tyres,  
please contact our distributor:

**PROTYRE MOTORSPORT**

Elswick Road, Fenton Ind Est - ST4

2SH - Stoke On Trent

United Kingdom

+44 17 82 411 001

[shaun.chetwyn@protyre.co.uk](mailto:shaun.chetwyn@protyre.co.uk)

**PROTYRE MOTORSPORT**  
www.protyre.co.uk



**MICHELIN**

*A better way forward*

### Sportity

Because of the COVID-19 Pandemic we will be making extensive use of the Sportity App to ensure Competitors, Marshals and Officials have access to all the documents and Information they need.

Please ensure you download the App and login, you will then receive the latest Documents, Amendments and Information as soon as it is published, you will receive a notification when they are available.

This includes Results throughout the day as well as live online.



# Sportity

For direct event information please download the Sportity app and insert this password:

# MGJ21NBBHS

Sportity app is available in

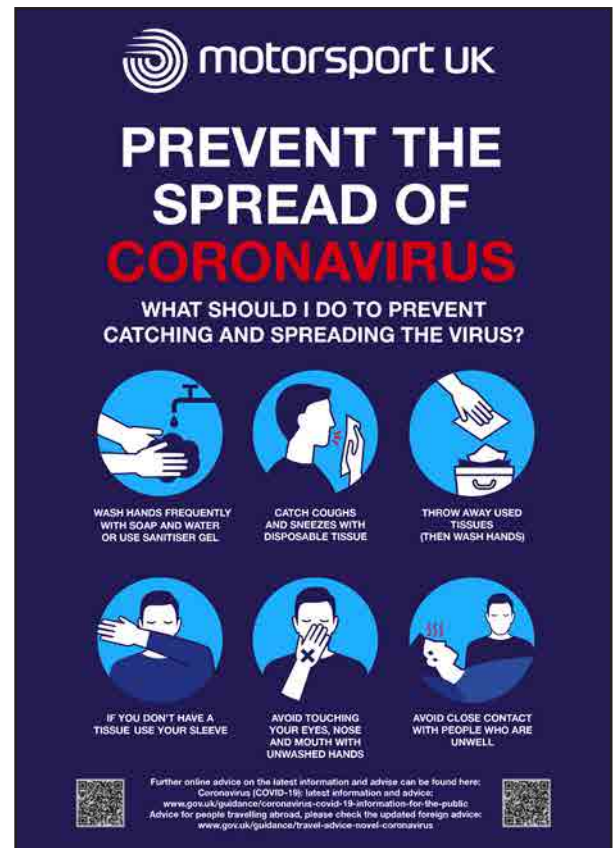


[www.sportity.com](http://www.sportity.com)



## COVID-19

This event will be run under COVID-19 Guidelines.





# Supplementary Regulations

## Welcome to the 2021 MGJ Engineering Brands Hatch Winter Stages.

Organising a motorsport event, at any level, is a challenge and the additional considerations to ensure we safeguard our marshals, officials and competitors are at the forefront of our minds.

The planning for the 2021 event has, and is, taking place during a time where it is impossible to know for sure what the situation will be in the months or weeks ahead.

The organising team have made a number of changes to the event to ensure that whatever the guidelines or restrictions are at the time, we can run a safe and enjoyable event.

For our regular competitors, there will be a number of changes to the service area and stage layout as well as to documentation, scrutineering and noise checks.

I would ask that all competitors, including the driver, read and digest these regulations, preferably before the 16th of January.

If you have any questions there is plenty of time to ask before the event and we will be happy to hear from you.

I would like to say Thank You in advance to the whole organising team, all volunteer marshals and officials, and a big thanks for the ongoing support of Mick Johnson of MGJ Engineering for his generous backing.

I am really looking forward to seeing you all at Brands Hatch in January and I hope it will be a fresh start to the year for you and rallying in general in 2021.

Dave Town  
Clerk of the Course



# Supplementary Regulations

1	Announcement	Page 8
2	Jurisdiction	Page 8
3	Sponsor	Page 8
4	Authorisation	Page 8
5	Route & Seeding	Page 8
6	Competitor Eligibility	Page 8
7	Classes and Vehicle Eligibility	Page 8
8	Championships	Page 9
9	Event Timetable	Page 9
10	Acceptance of Entries	Page 10
11	Officials of the Meeting	Page 11
12	Scrutineering, Sound Test and On Board Video Cameras	Page 12
13	Documentation/Signing On	Page 13
14	Identification	Page 13
15	Official Notice Board & Rally HQ	Page 14
16	Specific Regulation for Brands Hatch	Page 14
17	Roadbook, Timecards & Rally Pack	Page 15
18	Driving Standards, Observers and Judges of Fact	Page 15
19	Safety, 30 Second Starts and Red Flags	Page 15
20	Controls	Page 16
21	Servicing and Parc Fermé	Page 18
22	Refuelling	Page 18
23	Damage Declaration and Damage to Third Party Property	Page 19
24	General Regulations	Page 20
25	Penalties	Page 20
26	Penalty Markers	Page 21
27	Results, Protests and Appeals	Page 21
28	Awards	Page 21
29	Services	Page 22
30	Acknowledgements	Page 22
31	COVID-19	Page 22

Cover Photo: M&H Photoography

# Supplementary Regulations

## 1 Announcement

- 1.1 Chelmsford Motor Club will organise an Interclub Permit Multi-Use Special Stage Rally on Saturday 16th January 2021 at Brands Hatch Circuit, Fawkham, Kent. The event will be known as the 'MGJ Engineering Brands Hatch Winter Stages'.
- 1.2 Chelmsford Motor Club will be implementing all Motorsport UK Covid-19 virus protection guidelines. These include the use of Electronic Management of Information & Documentation where possible and the use of Contact-less Timing Systems.

## 2 Jurisdiction

- 2.1 Held under the General Regulations of Motorsport UK (incorporating the provisions of the International Sporting Code of the FIA), these Supplementary Regulations, and any written instructions that the organising club may issue for the event.

## 3 Sponsor

- 3.1 The event is sponsored by MGJ Engineering.

## 4 Authorisation

- 4.1 Motorsport UK Permit Number: 119541

## 5 Route & Seeding

- 5.1 The event will take place at Brands Hatch Circuit (entrance via Map Ref. 188/569645) and will contain up to 8 Stages with approximately 40, sealed surface, stage miles. There will be 250 metres of unsealed surface per stage. The Stages will be timed to an accuracy of less than a minute in accordance with Motorsport UK GR R31.1.3. The first car will start the first stage at 09:00 and the remainder will follow at 30 second intervals; all Stages will start at 30 second intervals. Competitors will start MTC 1 according to the Start List which will be published on the Virtual Notice Board on the Sportity App. If during the day it becomes apparent that a competitor's performance is greater or less than that which he is seeded, the Clerk of the Course may re-seed them on safety grounds.

## 6 Competitor Eligibility

- 6.1 The event is open to all fully elected members of the organising club and member clubs of the following regional associations, and Registered Contenders of the Championships in SR 8.

Association of Eastern Motor Clubs  
Association of Central Southern Motor Clubs  
Association of South Eastern Motor Clubs  
East Midlands Association of Motor Clubs

## 7 Classes and Vehicle Eligibility

- 7.1 Cars will be split into the following Classes:

Class A	All 2 Wheel Drive Cars up to and including 1400cc
Class B	All 2 Wheel Drive Cars 1401cc up to and including 1600cc
Class C	All 2 Wheel Drive Cars 1601cc up to and including 2000cc
Class MX5	All Mazda MX5 cars 1595cc up to and including 2010cc.



# Supplementary Regulations

Class D	All 2 Wheel Drive Cars 2001cc and over.
Class E1	All 4 Wheel Drive Cars fitted with H Pattern Gearbox.
Class E2	All other 4 Wheel Drive Cars.
Class H	Historic Cars
Class GT	GT cars in line with Motorsport UK R46.4 regulations or FIA R/GT regulations

## 7.2 NOTES

- For engines with a forced induction system (turbocharger, or super charger etc.) a multiplication factor of 1.7 shall be applied to the actual engine capacity and then the appropriate class determined by the new engine capacity.
- The event is open to all cars complying with Motorsport UK GR R46 & R47.

## 8 Championships

- 8.1 The event is a round of the following Championships.
- 8.2 2021 AEMC/AEMC Marsh Commercial Stage Rally Championship
- |                                  |  |
|----------------------------------|--|
| Championship Registration Number | tba  |
| Co-ordinator                     | Paul Barrett - 01245 290902/07771 976761                                   |
| Website                          | <a href="http://www.aemc.org.uk/StageRally">www.aemc.org.uk/StageRally</a> |
- 8.3 2021 ACSMC Hamilton Motorsport Tarmacadam Rally Championship
- |                                  |  |
|----------------------------------|--|
| Championship Registration Number | tba  |
| Website                          | <a href="http://www.acsmc.com">www.acsmc.com</a>                             |
| Co-ordinator                     | Mark Baulch - <a href="mailto:stagerally@acsmc.com">stagerally@acsmc.com</a> |
- 8.4 The 2020/2021 Motorsport News Circuit Rally Championship in association with MSVR Championship
- |                     |  |
|---------------------|--|
| Registration Number | tba  |
| Website             | <a href="http://www.msnrallychamp.co.uk">www.msnrallychamp.co.uk</a> |
| Co-ordinator        | Darren Spann - 01204 279924  |

## 9 Event Timetable

- 9.1 23rd November 2020  
18:00 Regulations Published
- 9.2 26th November 2020  
**19:00** Entries Open at <http://brandshatchstages.co.uk/>
- 9.3 9th December 2020  
**09:00** Signing On Opens at <http://brandshatchstages.co.uk/>
- 9.4 9th January 2021  
20:00 Entries Close  
20:00 Competitor Bulletin No 1 available on the Sportity App  
**21:00** On-Line Signing On Closes
- 9.5 11th January 2021  
09:00 Rally Packs sent to nominated Competitor. (Royal Mail Tracked 24)
- 9.6 16th January 2021  
08:57 First Car due at MTC 1  
18:00 Approx. Last car at MTC 9

# Supplementary Regulations

## 10 Acceptance of Entries

### 10.1 Acceptance of Entries

PLEASE NOTE ALTHOUGH WE WILL ACKNOWLEDGE ALL ENTRIES, THEY WILL NOT BE ACCEPTED UNTIL ALL DETAILS ARE COMPLETE AND FULL PAYMENT HAS BEEN RECEIVED. We do not recognise TBA, TBC, 0 or other such variants; this will not be classed as a completed entry.

The maximum entry for the meeting is 100 plus reserves, the minimum is 60. Should the minimum figure not be reached, the organisers reserve the right to cancel the meeting.

Only fully complete and paid entries will be shown on the event website: The first 75 entries will be accepted on a first come first served basis, with a further 25 entries accepted at the organisers' discretion. It is a requirement that all parts of your entry application are completed before your entry is considered completed. It is a requirement for accepted entries to complete a media/commentator sheet, please ensure you do this at the time of submitting your entry.

NB: The initial list of 'accepted' entries will not be published until the first payments have been processed which will take up to 48 hours.

10.2 Any person under the age of 18 signing-on as specified in GR D13.1 (where the Parent is not present) must be accompanied by a Guardian who must produce authorisation from the Parent to act as Guardian (GR D13.1.1).

### 10.3 Changes of Entry

If more than one change of driver's or co-driver's name in an accepted entry is made then the entry will be reclassified as an incomplete entry and may be entered into the reserve list, with the original entry being replaced by the first available reserve, subject to 100 entries already having being accepted.

10.4 The entry fee is £330. Entries must be made on the On-Line Entry Form at <http://brandshatchstages.co.uk/>. You must pay by Electronic Bank Transfer (details given on the Entry Form when you fill in the on-line entry).

10.5 Entry fees will be refunded as below:-

Up to and including 09/01/2021 - Full refund (except for dishonoured cheques) provided written or email confirmation of such is received by the Entries Secretary before the closing date.

10/01/2021 - 16/01/2021 - Motorsport UK Fees & Insurance only refunded.

Competitors who fail to start and who do not inform the organisers will forfeit the whole entry fee.

10.6 Competitor Bulletins will be posted on the Virtual Notice Board only.

# Supplementary Regulations

## 11 Officials of the Event

Clerk of the Course	:	David Town Email: coc@brandshatchstages.co.uk
Assistant Clerk of the Course & Spectator Safety Officer	:	Mark Andrews
Secretary of the Meeting	:	Gary Nicholls (m) 07895 040441 Email: secretary@brandshatchstages.co.uk
Event Safety Officer	:	Dave Judd
COVID-19 Officer	:	Dan Pearson
Entries Secretary	:	Suze Endean (M) 07714 585547 Email: entries@brandshatchstages.co.uk
Child Safeguarding Officer	:	Matt Endean
Equipment Officer	:	Gary Maddocks
Chief Marshal	:	Luis Gutierrez Diaz (m) 07847 600598 Email: marshal@brandshatchstages.co.uk
Assistant Chief Marshal & Radio Co-ordinator	:	Karen Scott
Radio Controller & Deputy Clerk of the Course	:	Ken Paterson
Motorsport UK Timekeeper	:	Gary Nicholls (Motorsport UK National)
Rescue & Recovery Services	:	Cam Rescue (Zoe Webber) Cam Rescue 2 (Charley Webber) Cam Recovery (Paul Hull) Forest Recovery (Graham Burton)
Motorsport UK Steward	:	tba
Club Stewards	:	Alan Barnard & Richard Nel
Chief Medical Officer Paramedic & COVID-19 Medical Officer	:	John Horton
Paramedic	:	Nathan Hone
Motorsport UK Chief Scrutineer	:	Howard Downes (m) 07799 076234



# Supplementary Regulations

Motorsport UK Scrutineers	:	John Gray, Geoff Oates & Paul Hewer	
MNCRC Eligibility Scrutineer	:	Paul Hewer	(m) 07960 898234
Motorsport UK	:	Mike Hall (Sound) Environmental Scrutineers Martin Beamish (Sound)	(m) 07724 153576
		Jack Mather	(m) 07568 555242
		James Swallow	(m) 07807 211829
Press & Publicity Officer	:	Andrew Bisping	(m) 07804 833737
		Email: media@chelmsfordmc.co.uk	
Results	:	MCS Rally Results	
Results Officer	:	Ben Scott	
Service Area Co-ordinator & Service Area Safety Officer	:	Jim Bowie	(m) 07799 535190
Competitor Relations Officer	:	Tom Ward	(m) 07804 243255

COMPETITORS SHOULD ONLY PHONE OFFICIALS BETWEEN 19:00 AND 21:30

## 12 Scrutineering, Sound Test and On Board Video Cameras

12.1 There will be no physical vehicle scrutineering. Competitors will be required to Sign a Pre-Event declaration that their vehicle complies with Current regulations. You will be required to upload a scanned/photograph copy of all pages of the CCLB or Vehicle Passport. Scrutineers will be in attendance at the event and will carry out spot checks on vehicles and competitor equipment before, during and after the event.

All vehicles must comply with Motorsport UK Technical Regulations. Competitors must bring their CCLB / Vehicle Passport, vehicle registration document and current MOT certificate (for all cars that are required by law to have one) for spot checks by the scrutineers. Competitors should study the current Year Book and make sure they understand the technical regulations. Tyres used must comply with Motorsport UK GR L of the current Motorsport UK Year Book.

Brake lights must work at all times. There will checks during the event both on and off stage. Penalty will be as per - Motorsport UK GR R Chart 32.2 (k).

### 12.2 Reminders

Motorsport UK GR R25.3. In conjunction with scrutiny of the car, if selected for a spot check, Drivers' and Co-Drivers' crash helmets, FHR Devices and overalls must be produced for approval.

Motorsport UK GR R25.3.1. All crew members must wear a crash helmet bearing an Motorsport UK approval sticker (Motorsport UK GR K.10.1 to K.10.3.1) and a fully fastened safety belt

# Supplementary Regulations

throughout any Special Stage.

Motorsport UK GR R25.3.2. The crew must also wear flame resistant overalls homologated to either FIA 8856-2000 or FIA 1986 Standard. Attention is drawn to (Motorsport UK GR K.9.1.2 and K.9.1.5 to K.9.1.7).

Motorsport UK GR R25.3.3. The crew must also wear FIA approved FHR Devices bearing an Motorsport UK approval sticker, fitted in accordance with FIA regulations.

Motorsport UK GR R25.3.4. Competitors are strongly recommended to carry a First Aid Kit.

Motorsport UK GR R18.6.5. Modified to require Spill Kits to be carried in all competing cars.

## 12.3 Sound Test

All cars will be required to pass a pre-event Sound Test as per Motorsport UK GR R4.1 and Motorsport UK GR J5.18.1 (100 dB(A) at 0.5 metres), and one or more subsequent Sound Test(s) during the course of the rally. ANTI-LAG SYSTEMS ARE PERMITTED.

12.4 On-board video cameras may be carried in competing cars in accordance with Motorsport UK GR J5.21.

## 13 Documentation/Signing On

13.1 There will be no physical Competitor Signing-On at this event. Signing-On must be fully completed electronically prior to the event using the event On-Line Signing-on Declaration (<http://brandshatchstages.co.uk/>). Competitors must upload a copy of their Competition Licence when completing their On-Line Entry. Competitors must also bring their Motorsport UK competition licences in case they are needed for a spot check, as well as a current, valid Motor Club membership card (as per 6.1).

**SIGNING ON CLOSES AT 21:00 ON THE 9TH JANUARY 2020, WE WILL MAKE 2 ATTEMPTS TO CONTACT YOU IF SIGNING ON IS NOT COMPLETE BY THIS TIME, AFTER THIS YOUR PLACE MAY BE OFFERED TO A RESERVE COMPETITOR.**

Competitors are reminded of Motorsport UK's requirements for Entrants Licences as laid down on the Licence Application form. All licences must be signed. Any person who fails to produce a valid licence when requested will be required to see the Motorsport UK Steward and complete a licence declaration before they are allowed to start and pay a fee as detailed in the current Motorsport UK Year Book. PLEASE NOTE WE CAN NO LONGER ACCEPT LICENCE APPLICATION FORMS ON THE DAY.

## 14 Identification

14.1 Competitors will be identified by competition numbers to Motorsport UK GR J4.1 which will be supplied by the organisers. All identification must be carried throughout the event and must be removed or covered on finishing the event or retiring. Rally Plates must be fixed to the front of the vehicle and be on display for the duration of the event.

14.2 Competitors may be requested, but will not be obliged to carry further advertisements.

# Supplementary Regulations

## 15 Official Notice Board and Rally HQ

- 15.1 Rally HQ will be in the Scrutineering Office in the Lower Paddock. Competitors should only visit if requested by an Official, for queries the Competitor Liaison Officer should be contacted via telephone (call, text message etc), see SR11 for contact details. The Virtual Notice Board will be on the Sportity App. Provisional and Final Results will be displayed on the Virtual Notice Board. You should make sure you have the means to access this before and during the event.

## 16 Specific Regulations for Brands Hatch

- 16.1 The following regulations are part of our contract with Brands Hatch.
- 16.2 Out of Bounds Areas will be shown in a Competitor Bulletin. Anyone who is found in an Out Of Bounds Area will be disqualified from the event and removed from the venue SR25(u).
- 16.3 All areas of the Rally Stage are out of bounds to competing crews and their associates for the duration of Friday 15th and on Saturday 16th January 2021. The circuit is out of bounds from 09:00 on Friday 15th until 18:00 on Saturday 16th.

Any persons found in these areas on foot, vehicle, bicycle etc. will have their entry cancelled and their entry fee will be forfeited.

- 16.4 Animals - Any person bringing Animals into Brands Hatch will be disqualified from the event and removed from the venue SR25(u).
- 16.5 Quad Bikes, Mopeds, Segways, Motorcycles etc. in the Service Area - Any person found using any Quad Bike, Moped, Motorcycle, Bicycles etc. in the Service Area will be penalised as per SR25(u).
- 16.6 Entry in to MSV Brands Hatch Motor Racing Circuit  
Each Entry will be supplied with 5 Entry Tickets (1 Driver, 1 Co-driver, 3 Service Personnel) and 2 Vehicle Passes which will be sent Electronically from the MSV Ticket System. MSN Circuit Rally Championship passes will not be valid for entry to this event. Access to the service area will be in-line with Motorsport UK guidelines at the time of the event. Wristbands for Competitors and Service Personnel will be provided to restrict access to the Service Area. These will be sent a few days before the event (See SR17).

Please note all Vehicles will be checked on arrival and Personnel must be in position of the MSV Entry Ticket which will have been sent Electronically from the MSV Ticket System, and a Wristband before entry into the Service Area can be permitted.

- 16.7 Damage to Venue  
Motorsport Vision are very sensitive to any damage caused to their venue. If you have a puncture you must not drive on the circuit, but stop and change it. Any damage caused and/or costs incurred will be the responsibility of the competitor. Chelmsford Motor Club and Motorsport Vision will seek full reimbursement.



# Supplementary Regulations

## 17 Roadbook, Timecards & Rally Pack

17.1 Entrants will be given access to a Roadbook on the Virtual Notice Board, giving details of Special Stages and the location of Controls, in the form of Stage Diagrams. These documents will provide all the information necessary to enable competitors to comply with Motorsport UK GR R6.1-3 and Motorsport UK GR R26.1-10.

Competitors will be sent a pack which will include, Road Book, Time Cards, Rally Plates, Vehicle Passes, Competition Numbers, Wrist Bands etc. by Royal Mail Tracked 24. These packs will be quarantined for 72 Hours prior to despatch along with UK.GOV Covid 19 Guidelines. You must nominate on the Entry Form the Name and Address where you want this pack delivered to by the 8th January 2021.

## 18 Driving Standards, Observers and Judges of Fact

18.1 Named Judges of Fact, appointed by the Organisers, will be on duty throughout the event to observe and report on any Competitor considered to be in contravention of Motorsport UK GR R24.7.

18.2 The Chief Scrutineer appointed for the event is a Judge of Fact in respect of Vehicle Eligibility.

18.3 All start officials on all special stages are appointed judge of fact for false starts.

18.4 The Organisers will appoint Driving Standards Observers in accordance with Motorsport UK GR G11 and Motorsport UK GR R24.8-R24.9.1.

18.5 Sound Control: The Organisers will appoint Judges of Fact and / or Driving Standards Observers, one of whom will be the Motorsport UK Environmental Inspector, to report on sound levels. The penalty for excessive sound may go as far as disqualification.

18.6 Judges Of Fact for the entire event will be named in a Competitor Bulletin which will be issued before the event.

For the following regulations: Motorsport UK GR R24.7.1, R24.7.2\*, R24.7.3, R24.7.4, R24.7.5, R24.7.6, R24.7.7, R24.7.8 and R24.7.10

\* Includes the taking of the correct route at a split junction.

All named Officials in either the event regulations, any Competitor Bulletin or Listed on the Virtual Notice Board and those listed in Competitor Bulletins.

## 19 Safety, 30 Second Starts and Red Flags

19.1 30 Second Starts, Split Junctions

Since competitors will start all Special Stages at 30 second intervals and each Stage may consist of more than one lap, there will be several cars circulating at one time. There will be a split junction and a merge on each Stage. Countdown markers will be positioned at 200 and 100 yards before these. Competitors should ensure they know which route to take each lap. A Marshal will be placed on each of these junctions; any crew who overshoots and reverses will be DISQUALIFIED.

# Supplementary Regulations

## 19.2 Red Flags

Motorsport UK GR24.4.5. On any special stage where extreme circumstances make it necessary to neutralise the competition e.g. where spectator safety is compromised, or to authorise the movement of non-competing or rescue vehicles, the system of Red Flags will be in place. These will be located at mid stage rescue points, all locations where a rescue/emergency vehicle may re-enter the stage following a shortcut and at each mandatory Radio Point (29.5). Red Flags will be displayed at all mandatory Radio Points preceding the incident, only on the specific instruction of the Clerk of the Course or Stage Commander.

Red Flags will be prominently displayed (held out steady not waved) by a designated marshal who MUST wear a marshals' tabard. Red Flags shall measure a minimum of 60cm x 70cm.

(i) Competitors who have been shown a Red Flag will be given a notional time for the stage.

(ii) The time of the deployment of the Red Flags will be recorded and notified to the Clerk of the Course.

(iii) No flag other than a Red Flag may be deployed at any point along the route of the special stage.

## Red Flag Procedure.

R25.6.4. On passing a Red Flag displayed by a marshal wearing a marshals' tabard, the driver MUST immediately and significantly reduce speed as well as being prepared to stop at any time; at no time must they overtake any safety vehicle they encounter on the special stage route. The driver must then follow the instructions of any marshals and/or stage safety personnel and maintain this reduced speed until leaving the special stage.

Failure to comply with this rule will incur a penalty at the discretion of the Clerk of the Course.

## 20 Controls & Timing

20.1 All controls will open at the due time for Car 1 and close 5 minutes after the due time of the last car. Special Stages will be timed by digital timers operated by Marshals under the control of the Chief Timekeeper. Such timing will be to the last completed second Motorsport UK GR R31.1.3. Should any of the timers fail, the organisers reserve the right to use any other available means for timing. Crews must present themselves with their cars at all controls. Time Cards are for Competitor Use Only.

## 20.2 Control Procedure

You should book into the Main Time Control (MTC (OUT)) at the exit from the Service Area at the time published on the Virtual Notice Board. After the Stop Line there will be a RC Control where you will be issued your time for the next MTC preceding the next Stage. The Final Control of the Rally is a MTC which is deemed an MTC (IN).

## 20.3 Main Time Controls (MTC (OUT)) Rejoin Point Motorsport UK GR R40.1.6 & GR R40.1.7

All Special Stages will be preceded by an MTC designated an MTC (OUT) Two cars will be due at the MTC (Out) per minute.

The Actual Arrival Time at MTC Controls will be the Time that the Competitor shows his Time Card through the Vehicle Window to the Marshal. A 'Real Time Display' will be sited at the Red Time Control Board. Marshals will record that Time on their Check Sheet. The Co-Driver should record this Time on the Time Card. Any competitor who arrives early should wait outside the

## Supplementary Regulations

control area (before the Yellow Board), only entering the control the minute before their Due Time. For example, if your due time is 09:04 then you should enter the control between 09:03:00 and 09:03:59.

### 20.4 Special Stages (SS)

Competitors will start all Stages at 30 second intervals. A Bogey Time will be set at 75 M.P.H. and a Stage Maximum Time set at approximately 30 mph.

### 20.5 All Competitors will receive penalties and accumulate lateness as follows:-

- |    |                                     |                   |
|----|-------------------------------------|-------------------|
| a) | Bogey Time or under                 | Bogey Time        |
| b) | Over Bogey, but under Stage Maximum | Actual Time Taken |
| c) | Over Stage Maximum                  | Stage Maximum     |

No extra time penalty will apply for exceeding Maximum Time on a Special Stage.

### 20.6 Special Stage Start Control (SSS)

Once a time has been given at the MTC (OUT), the crew must proceed to the SSS.

#### Stage Start Control - Line-Up

Competitors will be called visually to the Start Line in the order they entered the control. Alignment lights will be used to ensure you are correctly positioned. Watch the arrows for instructions.

The display at the Start line will be 'dual-function' with a display showing the 'Real Time' plus the traditional countdown light sequence of 5 amber lights and a green indicating 'Go' with automatic false start detection by a beam as per R25.7.3. Ahead of the actual start, the Co-Driver should record the anticipated start time for his/her records. If a driver is not ready to go, he cannot just wait for the next 30 seconds as his stage time will already have started. The Start Marshal will assume that the crew is ready to start the Stage and will issue a time as soon as the start line is clear, whether the crew is ready to start or not.

### 20.7 The Traffic Light Start Sequence is as below; no verbal warnings will be given and the competitor should leave the start on the Green light.

- |            |   |
|------------|---|
| 15 Seconds | Red Light   |
| 10 Seconds | Red & 5 Amber Lights  |
| 5 Seconds  | Red Light is extinguished and the 5 Amber Lights Count down 5-4-3-2-1 |
| 0 Seconds  | Green Light   |

### 20.8 Special Stage Finish Control (SSF)

The Flying Finish will have a light beam which is linked to the Digital Timer at the Stop Line. At the Stop Line, a marshal will enter the Car Number onto their Check Sheet and into the Timer. When he does this the Competitors Car No and Finish Time will appear on the Display at the Stop Line. The Co-driver should record the Time on the Time Card. If there is a query, they should raise it on return to the Service Area - not at the Stop Line.

They should move off swiftly as soon as the Marshal has indicated for you to do so and return to the Service Area via RC/MTC (IN). Any crew who fails to stop at the Special Stage Finish Control must not, under pain of disqualification, reverse to the stop line but must return on foot.



# Supplementary Regulations

## 20.9 Regrouping Controls (RC)

At the SSF Control at the end of Stage 1 to 7, competitors will return to the service area as stated in the Roadbook for the next Service Halt via a RC control which is designated an MTC (IN) Control. At the Regroup Control a Display will show your Car Number and the Time you are due at the next MTC (Out) for the next stage.

## 20.10 Main Time Control (MTC (IN))

At the end of the event after Stage 8 SSF there will be an MTC (In) Control which will be the finish of the event.

## 21 Servicing & Parc Fermé

### 21.1 Servicing

The Service Area will be in the Lower Paddock at Brands Hatch Circuit. Servicing is defined as work being carried out on the competing car by any person other than the competing crew, or the use of any parts or tools not carried in the competing car. Servicing will only be permitted in the Service Area, see Motorsport UK GR R38 & R39. Details for Trailers; Trailers must be parked close to your Service Bay. All other parts of the circuit will be out-of-bounds to service vehicles except the access road to and from the service area. Service Personnel will not be permitted to go to the assistance of competitors who break down on a Special Stage. Cars which are stranded out on the stage may have to remain there until the end of the event. The organisers will endeavour to move cars which are in a dangerous position but do not guarantee to provide assistance in returning them to the Service Area, although every effort will be made to clear broken down vehicles in between Special Stages.

### 21.2 Parc Fermé

In the area between the MTC and the SSS designated as "Parc Fermé", the only work permitted in these areas is the following (unassisted): Cleaning lamp glasses, windscreens, windows, identification markings and vehicle registration numbers.

21.3 Motorsport UK & Event requirements for Servicing will be published in a Competitor Bulletin. See Motorsport UK website, <https://www.motorsportuk.org/the-sport/rally-future/>. All Servicing must be carried out with the competing vehicle on a groundsheet. The use of metal cutting, grinding or welding equipment in any service area at any time is prohibited.

21.4 No spectators are allowed in the Service Area.

## 22 Refuelling

22.1 All competitors must refuel in the designated Refuel Zone which will be detailed in Competitor Bulletin No 1. It is not permitted to refuel in any other location within the confines of Brands Hatch Circuit.

22.2 Fuel can be pre-ordered from Vital Equipment 01981 241169 - Competitors are encouraged to use this service where possible

22.3 There is a designated area for refuelling, this area will comprise of a Vital Equipment dispensing area and a self refuel area. Competitors using the self-refuel area will only be permitted to

## Supplementary Regulations

dispense fuels via hand pumps. This is mandatory for both Championship and Non-championship Competitors. Vital equipment will have a range of dispensing pumps available on the event (the cheapest pump is less than £10 to buy). For the avoidance of any doubt refuelling using jerry cans and funnels is no longer permitted - This is to protect our sport.

Competitors self-refuelling must deposit their fuel in BS standard fuel canisters with the Environmental Scrutineer into the refuel area by 08:30 on 16th January 2021. You must not start transporting fuel across the service area whilst the rally is in progress. Please note that your fuel canisters will be tagged and logged and released for use to your nominated person(s) only. No under-17s will be allowed in the refuelling zone.

In all Refuelling Zones, a 5mph speed limit will apply.

The relevant personnel must be wearing clothing which will provide adequate protection against fire. This can be your race suit. Competitors must have their fire extinguishers armed whilst in the refuel zone and the hand-held extinguisher out of their car ready for use should it be needed.

The fuel supplier or the organiser, whoever is responsible for running the refuel zone, is responsible to protect the ground with an Environmental Mat which shall be composed of an absorbent upper part and an impermeable lower part.

The responsibility for refuelling is incumbent on the competitor alone.

Engines must be switched off throughout the refuelling operation.

The use of a pump in the self-refuel area is mandatory.

You must only refuel on your way out to stage, not on your way in from. This will allow chance for your vehicle to cool down.

There must be no one inside the car whilst refuelling is taking place.

Mobile phones must not be used in the refuel area.

Competitors must collect their fuel cans and associated equipment from the refuel zone within 30 minutes of the last car finishing the last stage. Failure to collect in this timeframe will result in the equipment being left unattended to which the championship, its partners and event organisers accept no liability.

### 23 Damage Declaration & Damage to Third Party Property

#### 23.1 Damage Declaration

Competitors at the conclusion of the event shall sign a declaration to the effect that they have not been involved in any incident that may have caused damage to persons or property, or alternatively give details of such incidents.

Failure to comply will be penalised under Motorsport UK GR R40.1.3 & R40.1.4 & Motorsport UK GR Chart 32.2(p) and may be reported to the Motorsport UK for further action.

# Supplementary Regulations

Competitors who retire and those who complete the event must go to the Sportity App and click Damage Declaration Link and complete this within 72 hours of the finish of the event. Failure to complete this declaration may be penalised by a fine of up to £100.

## 23.2 Damage to Third Party Property

The Motorsport UK Insurance Policy does not cover Circuit Damage.

Competitors causing damage to any third-party property will be liable for the full reinstatement cost of any damage caused. Where the damage is covered by the Motorsport UK insurance policy, the competitor will be liable for the insurance excess that Chelmsford Motor Club has to pay Motorsport UK, currently £450.

23.3 Any Competitor coming into contact with any Timing Equipment will be penalised as per 25.8 (w).

## 24 General Regulations

24.1 All other General Regulations of the Motorsport UK apply as written except for the following which are modified.

24.2 Motorsport UK GR H30.1.3(e) Competitors will be required to carry advertising material supplied by the Organisers on behalf of their sponsors.

24.4 Motorsport UK GR R5.4.3 Only the first named driver on the entry form may drive the vehicle.

24.5 Motorsport UK GR R31.2.5 Maximum Permitted Lateness is amended to 5 Minutes. Competitors may miss a maximum of 2 stages Motorsport UK GR R40.1, but will be penalised as per Motorsport UK GR R32.2 (a) (ii). To be classified as a finisher and you must visit the last MTC under your own power. Competitors may only join at Rejoin Points, these will be MTC 2-8 (Out) Controls. You must obtain permission from the Clerk of the Course and have your vehicle scrutineered. Please note you must visit MTC 1 to start the event.

24.6 Motorsport UK GR R18.6.5 Spill Kits must be carried in competing car (See SR 12.2).

## 25 Penalties

25.1 Penalties will apply as per Motorsport UK GR R Chart 32.2 and any amendments that the Motorsport UK may make, except for the following which are modified or added:

25.2 (h) For each minute over target time on a road section  
or for each minute over target time in a Service Area. 10 seconds

25.3 (o) Breach of Motorsport UK GR R38.1.2-4 & SR 21 (Servicing) Disqualified from the event.

25.4 (p) Modified to include breach of SR24.6 (Spill Kits) Disqualified from the event.

25.5 (t) Striking a group of Penalty Markers (See SR.26). 10 Seconds per Incident

25.6 (u) Contravention of SR16 & SR22 Disqualified from event and removal from the venue.



# Supplementary Regulations

25.7 (v) Coming into contact with another competitor's vehicle. 10 Minutes per Incident.

25.8 (w) Stage Maximum and responsible for any repair costs that may be necessary.

## 26 Penalty Markers

26.1 In order to restrict average speeds for the Special Stages, various man-made barriers forming chicanes etc. may be set up which will be detailed in the Roadbook. These barriers will be deemed to be made up of Penalty Markers. A Penalty of 10 seconds will be applied to any car hitting a group of Penalty Markers. Competitors who drive through a group of Penalty Markers without making a reasonable attempt to follow the correct route will be penalised with the Stage Maximum Time as per Motorsport UK GR R Chart 32.2(c).

## 27 Results, Protests and Appeals

27.1 Interim results will be published at intervals during the event Online and on the Sportity App.

27.2 Ties will be resolved on the basis of fastest on the first, or subsequent earliest stage, and then on the basis of engine capacity.

27.3 In the event of unforeseen circumstances the organisers reserve the right to delete any stage or road section from the final results. Nominal times may be issued in accordance with Motorsport UK GR R24.5.

27.4 Motorsport UK GR R 40.1. To be classified as a finisher, a Competitor must report to all controls listed in the Road Book except as provided for in 32.2 (a) where two-thirds of the stage must have been completed and report to the final control within the maximum lateness specified, with the car in which they started.

27.5 If a Competitor fails to complete a Stage or misses a Stage, they may Re Join the event at a Rejoin Point. For this event a Rejoin Point is a Main Time Controls (MTC (OUT)) - Motorsport UK GR R40.1.6. Competitors will restart in Seeded Order.

27.6 Provisional results will be published at the finish as soon as possible after the last car has finished. Protests and appeals must be made in accordance with Motorsport UK GR R5.1.7.

## 28 Awards

28.1 Awards will be presented as follows

A)	1st Overall	2 Awards.
B)	2nd Overall	2 Awards.
C)	3rd Overall	2 Awards.
D)	1st in each Class	2 Awards.
E)	2nd in each Class	2 Awards.
F)	3rd in each Class	2 Awards.

28.2 There will be no formal awards presentation. Awards will be Framed Photos of your Car, and will be sent to you after the event.

# Supplementary Regulations

28.3 Additional awards may be presented and these will be detailed in Competitor Bulletin 1. No competitor may win more than one award.

## 29 Services

- 29.1 Catering Will be available at the Circuit via MSV Outlets and The Kentagon.
- 29.2 Videos MAD Videos are the Official Video Supplier for the event.  
Call Ian Madison on 01472 561281
- 29.3 Photographs Andrew Manston is the Official Photographer for the event.  
Call Andrew Manston on 01795 479224 or  
email [mandh\\_photography@live.co.uk](mailto:mandh_photography@live.co.uk)
- 29.4 Tyre Suppliers Protyre will be in attendance for the event, please contact them  
beforehand for any special requirements. PROTYRE MOTORSPORT  
01782 411001 - [shaun.chetwyn@protyre.co.uk](mailto:shaun.chetwyn@protyre.co.uk)
- 29.5 Fuel Suppliers Fuel can be pre-ordered from Vital Equipment on 01981 241169

## 30 Acknowledgements

We thank the following people and companies for their continued support for the event.

**Mick Johnson of MGJ Engineering  
Motor Sport Vision  
Motorsport UK  
All Safety & Rescue Crews  
All Marshals and Officials**

## 31 COVID-19 Competitor Guidance

The following important guidance is supplied to support competitors attending motorsport events:

- Stay at home if you know you have been exposed to COVID-19 in the previous 14 days, if you are showing symptoms as indicated in Government guidelines, or if you suspect you might be infected and are awaiting results of a coronavirus test.
- Complete the self-declaration form electronically including the details of your team members for Test and Trace purposes; if you become ill at the Event, withdraw, notify the Organiser and contact NHS for a test
- Complete the vehicle and PPE declaration and note that Scrutineers will only be undertaking selected checks. For any doubts about compliance, contact the Chief Scrutineer before the event
- Check the SRs or Final Instructions for the Judicial and Results Procedures to be adopted. All documents will be electronic including results. Appeal and Protest forms are online at <https://www.motorsportuk.org/resource-centre/document-library/>

## Supplementary Regulations

- Protest and Appeal Fees are to be paid direct to Motorsport UK within 48 hours of the Event and any fines are to be paid within 7 days of the Event direct to Motorsport UK. Please call Motorsport UK 01753 765000 within these timescales to make your payments. There will be no provision at the Event to make these payments.
- If you are involved in an incident you MUST indicate to the marshal if you are OK by signalling with a thumbs-up at the front.
- If you can safely exit your vehicle, do so and then stand in a suitable location.
- Respect social distancing at all times.
- Keep your working areas well-ventilated (e.g. do not fully enclose an awning as a working space).
- We strongly recommend the use of a face covering (e.g. mask or balaclava) when inside venue/organiser buildings or if you are unable to maintain the applicable government social distancing guidance.
- Avoid touching fixed equipment including gates, barriers or benches.
- Remember to take with you:
  1. PPE mask/balaclava
  2. Gloves
  3. Hand sanitiser
  4. Basic first aid kit
  5. Your own hydration/food
- For further information about your specific discipline/event, visit the Motorsport UK website for more details: [www.motorsportuk.org/restart](http://www.motorsportuk.org/restart).



# MICIS

MOTORSPORT COMPUTER SERVICES  
**SPORTS TIMING SERVICE**  
**RALLY & SPRINT RESULTS SYSTEMS**

EVENT MANAGEMENT | SPORTS TIMING SERVICE  
RESULTS SERVICE | EVENT PRINT MANAGEMENT  
EVENT PAPERWORK | EVENT SIGN MANAGEMENT  
ROUTE CO-ORDINATION | ROAD-BOOKS

84 Totnes Walk, Chelmsford, Essex CM1 6LU  
[h] 01245 351468 | [m] 07895 040441  
Email: garyjnicholls@gmail.com

## Chelmsford Motor Club

Road Rally, Targa's, Navigation  
Regularity Events  
Results Service and Rally On Line Entry Systems



For further details contact Tony Michael:  
Email: arm@chelmsfordmc.co.uk  
Phone: 01245 466994 (H) or 01621 875522 (W)

# Chelmsford Motor Club

## Stage Rally & Sprint Timing Hire



Contact Gary Nicholls  
84 Totnes Walk, Chelmsford, Essex CM1 6LU  
[h] 01245 351468 | [m] 07895 040441  
Email: [garyjnicholls@gmail.com](mailto:garyjnicholls@gmail.com)



**MARSH**  
**COMMERCIAL**

# **Specialist Motorsport Insurance**

**[marshcommercial.co.uk/motorsports](https://marshcommercial.co.uk/motorsports)**